

LAYING TECHNIQUES FOR HOMOGENEOUS AND MULTILAYERED ROLLS COMPACT OR ACOUSTIC



Ambient temperature
Floor temperature

IN ACCORDANCE WITH LOCAL STANDARD
NZS AS 1884:2013

Always check the material before starting work in order to avoid problems with visible defects. Please inform Belgotex NZ of any visible defects discovered and do not start work without their approval.

For CEN 32-33-34, Gerflor recommend Hot welding.
For CEN 21-22-23, Gerflor recommend Cold welding.

1. MATERIAL INSPECTION

- Rolls are clearly marked with batch numbers and the product should be checked for a match before installing
- Inspect all materials carefully to verify that the correct colours, lot number, patterns, quality and quantities have been shipped as ordered. Do not install, cut, or fit any material that has visible defects
- A contractor who installs material that has visible defects or damage without the prior consent of Belgotex NZ deems the

product acceptable for installation and therefore accepts full responsibility

NOTE: For the laying direction, refer to the Laying Directions Guidelines. Lay the rolls out flat 24 hours prior to installation.

Depending on the design, it might be necessary to cut the roll edges (1,5 cm). In that case, make a double cut.

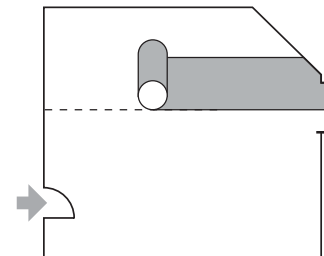
RECOMMENDATIONS TO PREVENT THE PRESENCE OF MOISTURE OR WATER IN THE UNDERSIDE OF PVC FLOORING:

- Install the material on dry substrate
- Measure the moisture content before installing the PVC flooring. Moisture levels must be in accordance with local standards
- Apply a waterproofing barrier (epoxy resin) if necessary
- After gluing, roll the floor in 2 steps (first manually and then with a 50 or 80kg roller)
- Chamfer, weld and trim the PVC rolls with a welding rope, the day after gluing (not on the same day) (Refer to [501] Hot welding)
- We recommend the coving installation in skirting using a V-corner for the outside angles (butterfly angle) and at 45° for the inside angles (Refer to [502] Coving system)
- In case of peripheral Trimming, follow the recommendation § 5.1 or 5.2
- If you are not using the coving system, caulk the periphery with PU or MS Polymer before installing the skirting
- Caulk around the door frame

2. POSITIONING

For laying direction, refer to document [201].

- As far as possible, and depending on the width of the rolls, seams between strips should be kept away from areas of heavy load.
- Within rooms, strips should be laid towards the main window or in a lengthwise direction.
- Within corridors, strips should be laid in the direction of pedestrian traffic unless otherwise stated in the contract specifications.
- Mark a longitudinal axis for reference to place strips.
- Unroll fully material.
- Check that the edge of strips are straight. Align the edge of the first strip to longitudinal axis to have a straight reference.
- Leave a gap of 1 cm between every strip to let possible full material acclimation in its length as in its width. If area is too small, it is possible to overlap fully two strips.
- Let material relax during 24h. Material will be in the best conditions to be glued and material tensile or bubbles will be mostly released.



Apply the flooring along the chalk line.

IMPORTANT:

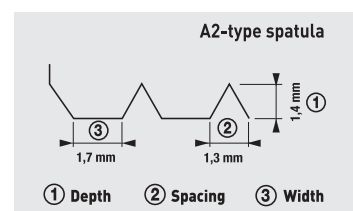
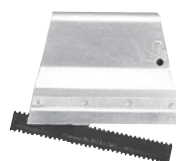
- **Welding joints:** Leave a space of max 1 mm between the strips
- **Cold seaming:** Overlap the strips in order to cut edges flush

3. GLUING AND FITTING

- This is done 24 hours after having unrolled and laid out the lengths.
- The application is done by priming and using acrylic emulsifying adhesives with a finely toothed spatula or trowel A2 Norm TKB or 1/16" x 1/16" x 1/16" square notch (1.6 mm x 1.6 mm x 1.6 mm). Coverage rate is 300 gr/sqm. To achieve this coverage, it is necessary to change the spatula regularly.

IMPORTANT:

- Forbid any trafficking for 48 hours after laying as well as any furniture movement.
- Follow carefully the recommendations of the adhesive manufacturer.



LAYING TECHNIQUES FOR HOMOGENEOUS AND MULTILAYERED ROLLS COMPACT OR ACOUSTIC

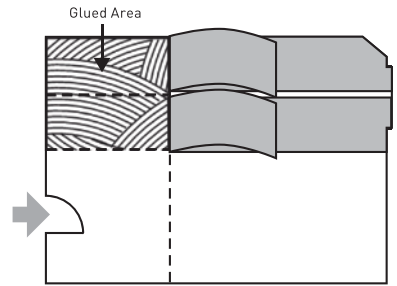
Closely follow the adhesive manufacturer's instructions with particular regard to its waiting time (the interval between application of adhesive and laying of flooring).

Glue coverage and spatulas for application are recommended by Gerflor.

Room temperature and humidity, sub-floor absorption and adhesive coverage are important in order to achieve perfect adhesion.

- Too short a waiting time will cause bubbling to occur
- Too long waiting time will result in poor transfer of the adhesive to the flooring
- Ensure that the correct amount of adhesive is applied to the sub-floor that corresponds to the number of sheets being installed, so that the adhesive's waiting time is not exceeded.
- Apply adhesive to an area no larger than can be covered within the glue's working time

- Remove any surplus glue spots immediately as work progresses
- Fold back half of the strips without pressure on the fold to avoid marks
- Spread the adhesive on the floor and lay the material against the chalk line
- Repeat this procedure with the other halves of the strips
- Do not overlap 2 films of glue when applying the adhesive

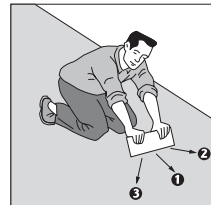


Fold back half of the strips when applying glue to the floor

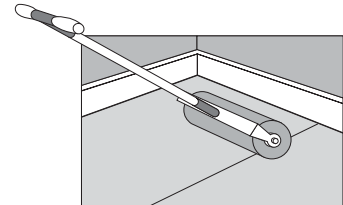
4. ROLLING OUT

Rolling out should be done in two stages:

1. Manually, using a cork smoothing press
2. By rolling over the entire surface with a 50kg roller when installation is complete



Stage 1: Pressing down manually



Stage 2: Using a 50kg roller

FLOORING (CERAMIC TILES, LINOLEUM, PARQUET WOOD, ...)

5. TRIMMING THE EDGE

■ 5.1 PERIPHERAL TRIMMING BEFORE LAYING A SKIRTING BOARD ALONG A TRANSITION PROFILE, OR OTHER FLOORING (CERAMIC TILES, LINOLEUM, PARQUET WOOD, ...)

We recommend the caulking method*, which consists of trimming the surface by leaving a space of 3 to 5 mm between the edge of the roll and the wall. Fill this space with a polyurethane sealant or MS polymer.

**This method ensures a better seal and prevents the infiltration of washing water, flooding or water from other rooms (e.g. bathrooms with ceramic tiles)*

■ 5.2 PERIPHERAL TRIMMING AFTER LAYING SKIRTING BOARDS OR LAYING ALONG AN EXISTING PLINTH

We recommend the method of trimming the coating by providing a space of 1 - 2mm between the edge of the lining and the plinth (skirting). Fill this space with polyurethane or MS polymer

This method ensures better waterproofing on the periphery and prevents the infiltration of washing water, flooding...

■ 5.3 USE OF COVING AS A SKIRTING SYSTEM

See [502] Coving system

6. WELDING

Heat welding requires a small gap 1 mm max to be left between the sheets during the gluing process. Cold welding requires perfectly straight edges. Employ an overlap cutting method during the gluing process. See Welding techniques [501].

7. PUTTING INTO SERVICE – ALLOWING TRAFFIC

After installation:

- For normal pedestrian traffic, allow 48 hours
- Before moving or installing furniture, allow 72 hours



For under-floor heating, do not turn on the heating for 7 days after installing the tiles

8. FURNITURE

- Ensure that the ends of chair and table legs, casters etc. are suitable for flexible flooring (PVC, Linoleum)
- We recommend using flat, patternless tips, with a full surface contact on the coating (avoid the use of conical tips)

- Do not use rubber end caps
- Ensure that office chairs are equipped with type H casters, in accordance with EN 12529

